



APARTMENT 2 MASTER WILLIAMS PLACE FOLKESTONE, CT20 1FF

£950 PER MONTH

Welcome to this brand new apartment situated in the sought-after Master William's Place, Folkestone. Completed in 2025, this newly built home offers well-designed accommodation comprising one reception room and one bedroom, making it an excellent choice for individuals or couples looking for a stylish and modern residence.

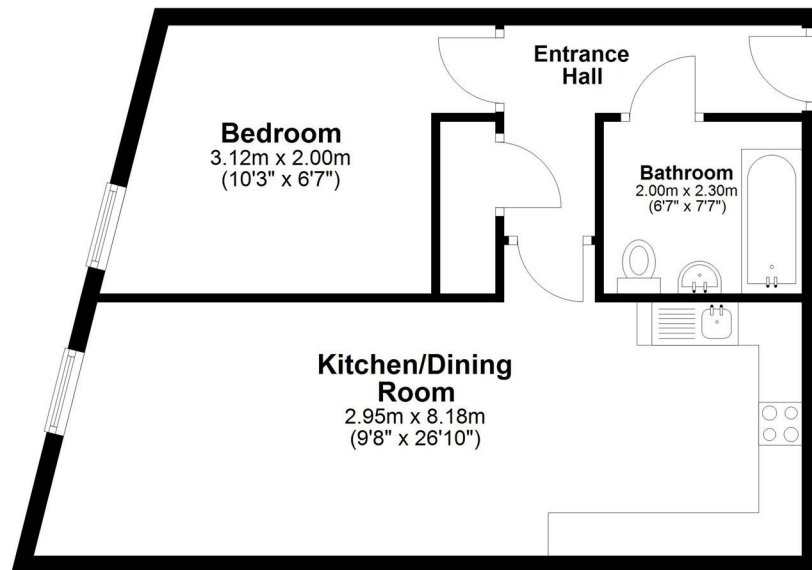
The kitchen is equipped with premium Bosch appliances, providing reliable performance and a sleek finish that enhances both functionality and aesthetics—ideal for everyday cooking and entertaining alike.

The building benefits from Folkestone's first-ever 10Gb/s leased line, offering the potential for exceptionally fast internet speeds, subject to a separate service agreement. This makes the apartment particularly well suited to remote working, streaming, or online gaming, with the flexibility to choose connectivity that suits your needs.

**WEST END
ESTATES**
LETTINGS AND PROPERTY MANAGEMENT

Ground Floor

Approx. 50.2 sq. metres (540.5 sq. feet)



Total area: approx. 50.2 sq. metres (540.5 sq. feet)

Whilst every attempt has been made to ensure the accuracy of the floorplan contained here, measurements of doors, windows, rooms and any other items are approximate and no responsibility is taken for any error, omission or mis-statement. This plan is for lustrative purposes only and should be used as such by any prospective purchaser. The services, systems and appliances shown have not been tested and no guarantee as to their operability or efficiency can be given.
Plan produced using PlanUp.



Energy Efficiency Rating		
	Current	Potential
Very energy efficient - lower running costs		
(92 plus) A		
(81-91) B	83	
(69-80) C		
(55-68) D		
(39-54) E		
(21-38) F		
(1-20) G		
Not energy efficient - higher running costs		
England & Wales	EU Directive 2002/91/EC	

EPC Rating: B Council Tax Band: A

Agents Note: Whilst every care has been taken to prepare these particulars, they are for guidance purposes only. All measurements are approximate and are for general guidance purposes only and whilst every care has been taken to ensure their accuracy, they should not be relied upon and potential buyers/tenants are advised to recheck the measurements

West End Estates Folkestone
7 Sapper Row
Folkestone
Kent
CT20 3WT

01303 478777
office@westend-estates.co.uk

**WEST END
ESTATES**
LETTINGS AND PROPERTY MANAGEMENT